



Malcolm Court

Stanmore

£425,000

A ground floor maisonette available chain free and in excellent condition with Davidson Frost-Wellings.

The property has a reception room with separate kitchen, two double bedrooms, a family bathroom and a large private garden to the rear.

Malcolm Court is a residential cul-de-sac, walking distance to the local shops and Stanmore station.

Harrow Council Tax Band D.
Leasehold of Approximately 130 Years Remaining.
Service Charge of Approximately £750 per year.
Ground Rent nil.

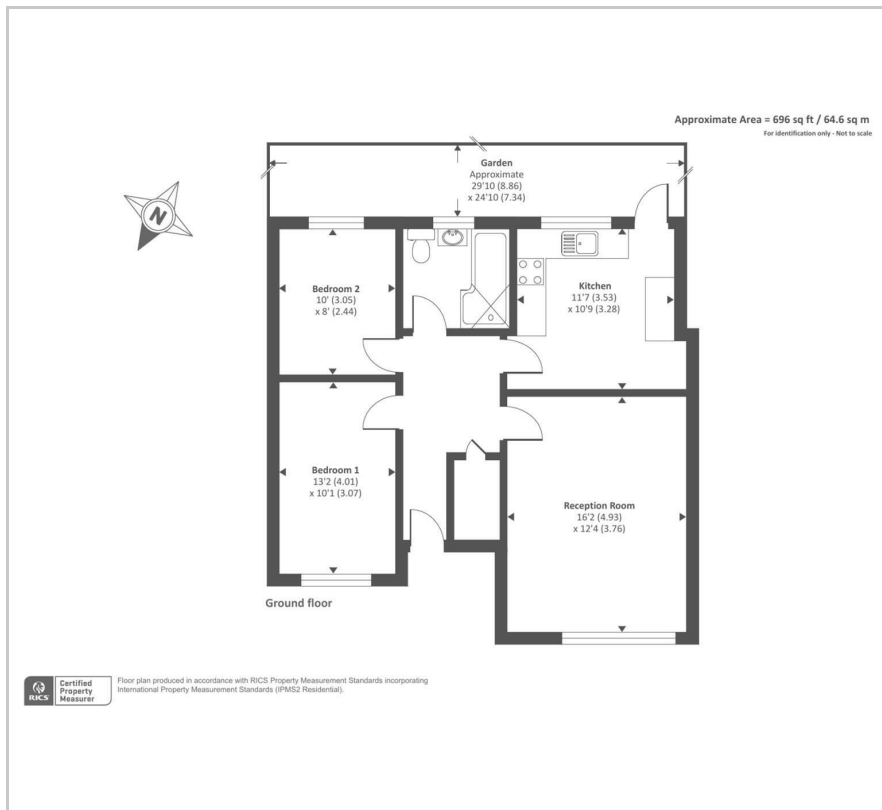
Viewing

Please contact our Davidson Frost-Wellings Office on 020 8954 8806 if you wish to arrange a viewing appointment for this property or require further information.

- Two Bedrooms
- Private Garden
- Cul-De-Sac
- Maisonette
- Chain Free
- Good Condition



Floor Plan

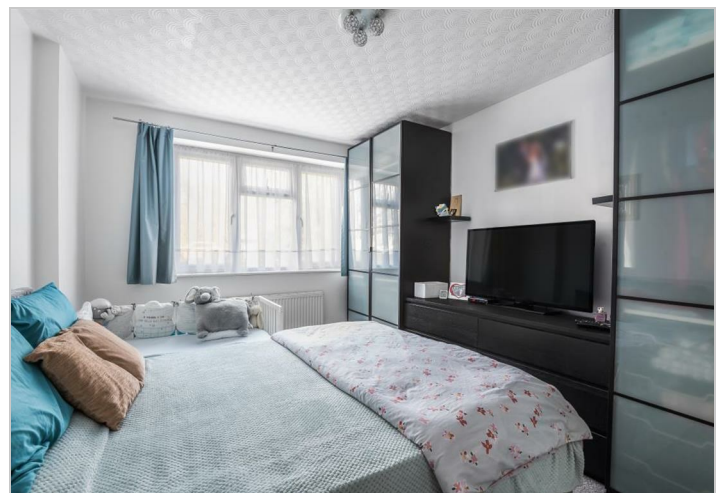


Area Map



Energy Efficiency Rating

	Current	Potential
Very energy efficient - lower running costs		
(92 plus) A		
(81-91) B		75
(69-80) C		
(55-68) D	59	
(39-54) E		
(21-38) F		
(1-20) G		
Not energy efficient - higher running costs		
England & Wales	EU Directive 2002/91/EC	



These particulars, whilst believed to be accurate are set out as a general outline only for guidance and do not constitute any part of an offer or contract. Intending purchasers should not rely on them as statements of representation of fact, but must satisfy themselves by inspection or otherwise as to their accuracy. No person in this firm's employment has the authority to make or give any representation or warranty in respect of the property.

47 The Broadway, Stanmore, HA7 4DJ

Tel: 020 8954 8806 Email: info@df-w.co.uk Website: www.df-w.co.uk